

SF21G - SF29G

GLASS PASSIVATED JUNCTION SUPER FAST RECTIFIERS

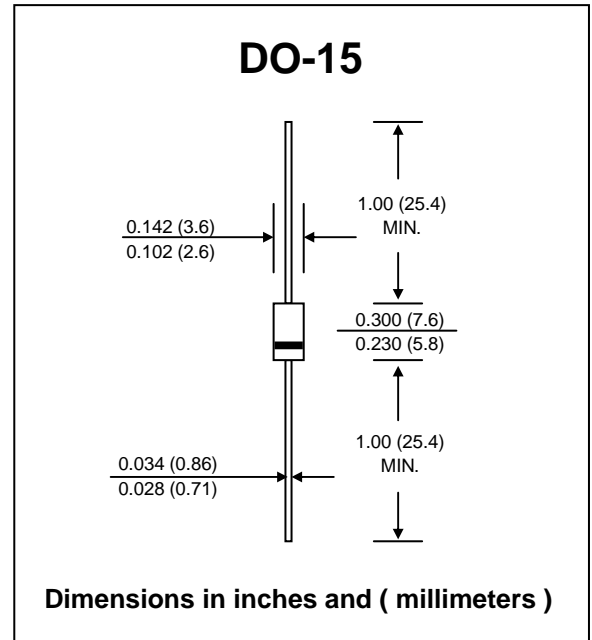
PRV : 50 - 1000 Volts
I_o : 2.0 Amperes

FEATURES :

- * Glass passivated junction chip
- * High surge current capability
- * High reliability
- * Low reverse current
- * Low forward voltage drop
- * Super fast recovery time
- * **Pb / RoHS Free**

MECHANICAL DATA :

- * Case : DO-15 Molded plastic
- * Epoxy : UL94V-O rate flame retardant
- * Lead : Axial lead solderable per MIL-STD-202, Method 208 guaranteed
- * Polarity : Color band denotes cathode end
- * Mounting position : Any
- * Weight : 0.4 gram



MAXIMUM RATINGS AND ELECTRICAL CHARACTERISTICS

Rating at 25 °C ambient temperature unless otherwise specified. Single phase, half wave, 60 Hz, resistive or inductive load.
For capacitive load, derate current by 20%.

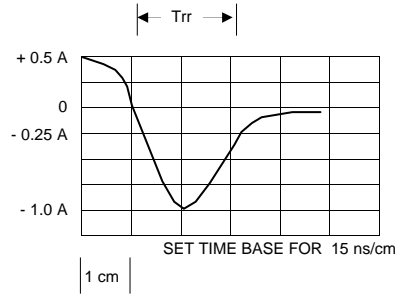
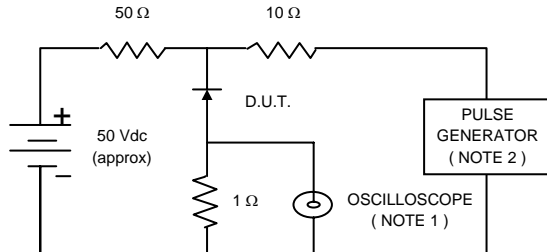
RATING	SYMBOL	SF21G	SF22G	SF23G	SF24G	SF25G	SF26G	SF27G	SF28G	SF29G	UNIT
Maximum Recurrent Peak Reverse Voltage	V _{RRM}	50	100	150	200	300	400	600	800	1000	V
Maximum RMS Voltage	V _{RMS}	35	70	105	140	210	280	420	560	700	V
Maximum DC Blocking Voltage	V _{DC}	50	100	150	200	300	400	600	800	1000	V
Maximum Average Forward Current 0.375"(9.5mm) Lead Length Ta = 55 °C	I _{F(AV)}	2.0									A
Maximum Peak Forward Surge Current, 8.3ms Single half sine wave Superimposed on rated load (JEDEC Method)	I _{FSM}	75									A
Maximum Peak Forward Voltage at I _F = 2.0 A.	V _F	0.95			1.7			3.5			V
Maximum DC Reverse Current at Rated DC Blocking Voltage	I _R	5.0						20			µA
Maximum Reverse Recovery Time (Note 1)	T _{rr}	35									ns
Typical Junction Capacitance (Note 2)	C _J	50									pF
Junction Temperature Range	T _J	- 65 to + 150									°C
Storage Temperature Range	T _{STG}	- 65 to + 150									°C

Notes :

- (1) Reverse Recovery Test Conditions : I_F = 0.5 A, I_R = 1.0 A, I_{rr} = 0.25 A.
- (2) Measured at 1.0 MHz and applied reverse voltage of 4.0 Vdc

RATING AND CHARACTERISTIC CURVES (SF21G - SF29G)

FIG.1 - REVERSE RECOVERY TIME CHARACTERISTIC AND TEST CIRCUIT DIAGRAM



NOTES : 1. Rise Time = 7 ns max., Input Impedance = 1 megaohm, 22 pF.
 2. Rise time = 10 ns max., Source Impedance = 50 ohms.
 3. All Resistors = Non-inductive Types.

FIG.2 - DERATING CURVE FOR OUTPUT RECTIFIED CURRENT

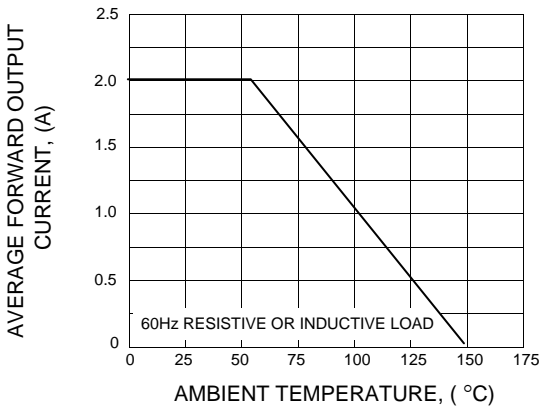


FIG.3 - MAXIMUM NON-REPETITIVE PEAK FORWARD SURGE CURRENT

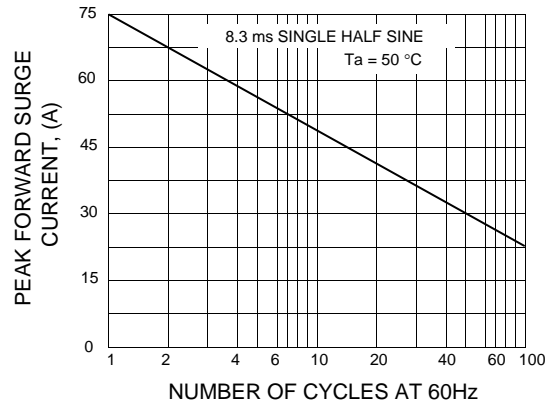


FIG.4 - TYPICAL FORWARD CHARACTERISTICS

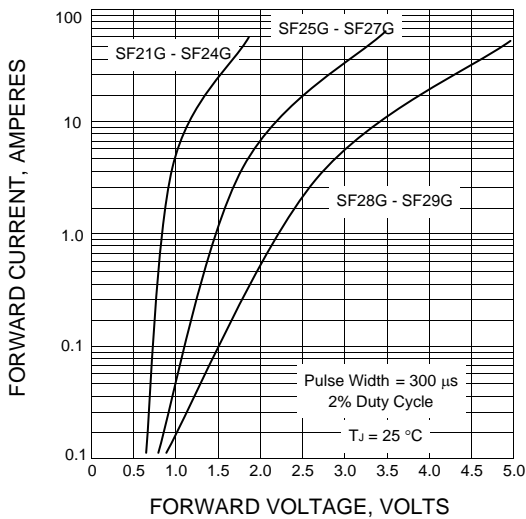


FIG.5 - TYPICAL REVERSE CHARACTERISTICS

